

General Installation Instructions



st. cloud window

To ensure proper performance, window must be installed square, level & plumb.

1. Verify with the approved shop drawings the correct location and label of the window being installed.
2. Confirm that the window size will properly fit into the rough opening. (Figure 1)
3. Insert the window frame and use approved shims to level sill. Center frame vertically and horizontally in opening. (Figure 2)
4. After the window is properly located in the opening and plumbed inside & out and side to side, insert four (4) installation screws. One (1) at the top & bottom of each jamb. Leave approximately 3/8" for adjustment. (Figure 2) Shim and Tighten screws.
5. While maintaining a plumb jamb inside & out and side to side, insert the remaining installation screws into the jambs, head and sill.
6. If trim clips are required, install per shop drawing specifications.

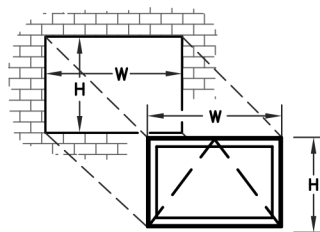


Figure 1

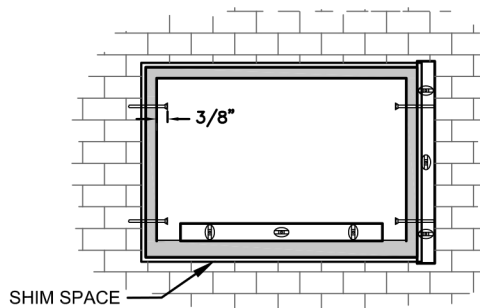


Figure 2

All installation holes processed for anchorage are to be used by the installer. Make sure all fasteners are tightened and seated.

7. CRITICAL DIMENSION CHECK.

Installer to verify the following:

- Squareness of the frame.
Measuring diagonally to verify $A=B$ (Fig. 3.1)
 - No bowing of frame at the midpoint.
Measure to verify $C=D$ (Fig. 3.2)
Measure to verify $E=F$ (Fig. 3.3)
 - Re-shim as necessary. Tighten remaining clips as necessary.
 - Make certain that all installation clips are on the same plane.
8. Insulate around frame as required. Install insulation in-board of the thermal barrier.
Do not bridge thermal barrier or overpack insulation.
 9. Seal with specified caulking around entire perimeter as per approved shop drawings.

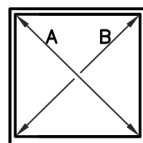


Figure 3.1

$A=B$

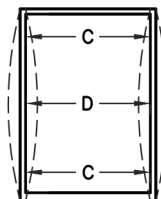


Figure 3.2

$C=D$

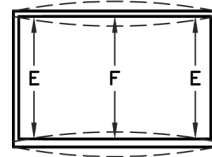


Figure 3.3

$E=F$

Figure 3

Casement Note:

When installing casements it is important to make sure the hinge side jamb is plumb inside & out and side to side. The remaining 3 sides should be set to the reveal of the operating sash.

Please take a few moments to inspect your windows before installing.
If any damage has occurred to your window(s) please contact St. Cloud Window prior to installation.

For further assistance or information. Please call 1-800-383-9311.



st. cloud window

390 Industrial Blvd, Sauk Rapids, MN 56379
800.383.9311

www.stcloudwindow.com
info@stcloudwindow.com