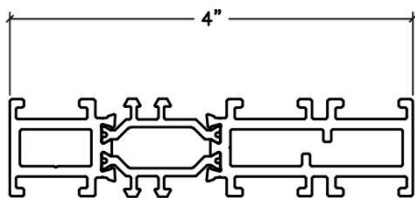
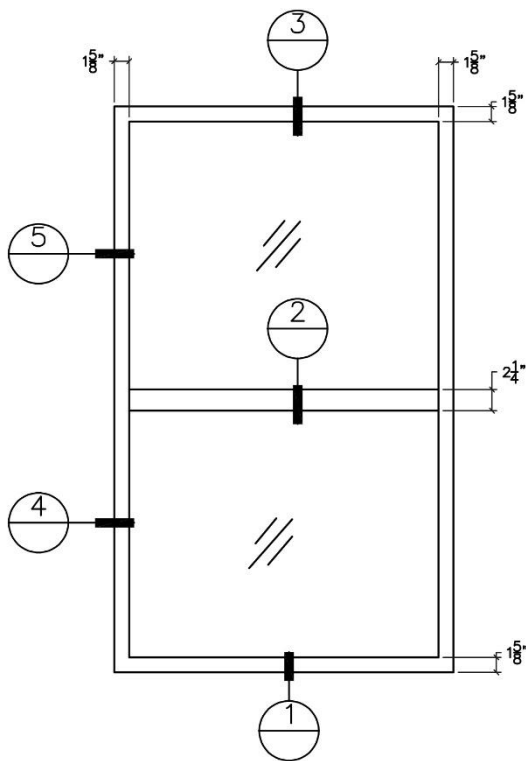


# SCW3060-A4 Offset Fixed Window



## Product

- Frame depth 4"
- Nominal 0.10" wall thickness
- AW-PG 100
- STC 31-41
- OITC 24-34
- U-Value .25-.31

## Applications

- All purpose
- Acoustic
- Historic

## Cutting Edge Design

- Glass-reinforced polyamide thermal break
- High-performance glass options





## Features

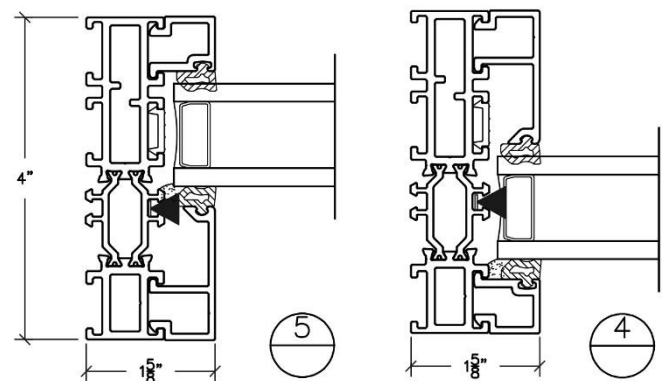
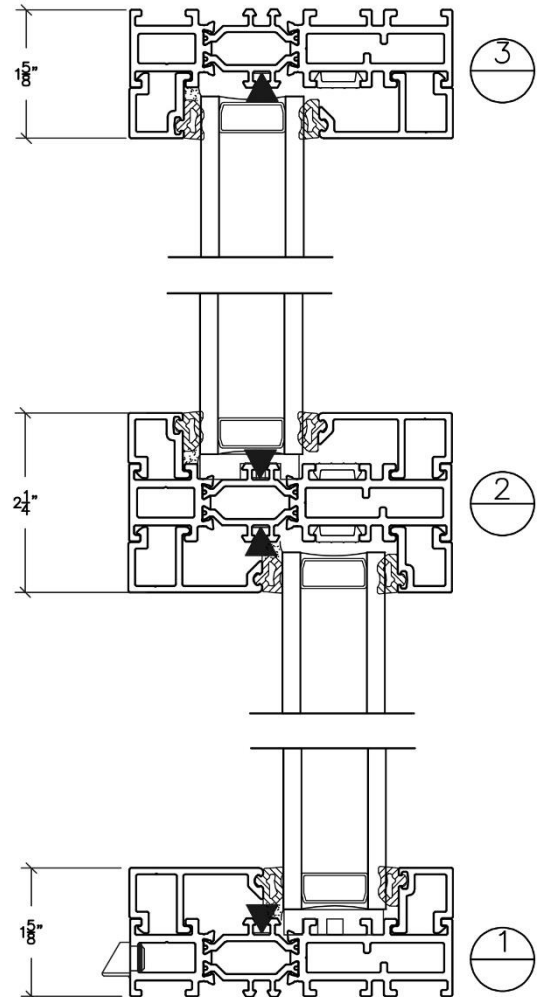
- 6063-T6 Aluminum alloy
- PA-66 Insulbar structural strut thermal barrier
- Integral 100% woven pile weather stripping for minimal air infiltration
- Extruded aluminum corner keys provide joint strength and alignment
- Integral weep system for superior water penetration resistance
- High performance 70% Kynar (AAMA 2605) paint, Class I anodized finishes
- Vertical or horizontal mullion options to meet design specifications and for added strength
- Exterior profiles customized for specific historic requirement

## Glazing

- 1" - 1.5" overall thick IG glass, factory glazed

## Optional Features

- Exterior profiles: Custom shapes, interior trims, and mullions to meet design specifications and for added strength
- Glazing: High performance, double, and triple insulated glass as well as tints, low-e, tempered, and laminated.
- Finish: Anodized or high-performance paint finishes, custom colors, and split finishes.
- Accessories: Simulated divided lite muntin grids



## Performance Data

U-Value	SHGC	STC	OITC	Air Infiltration @ 6.24 lbf/ft <sup>2</sup>	Water Penetration	Structural Load Pressure	Condensation Resistance (CR)	Forced Entry	AAMA Rating	Test Size
.25-.31	.16-.36	31-41	24-34	<0.01 cfm/ft <sup>2</sup>	15psf	±150.3 psf	46-51	Grade 10	AW-PG100	60"x 99"

Performance results may vary based on frame and glazing options.

For the most current product information visit [www.stcloudwindow.com](http://www.stcloudwindow.com) or contact your sales representative.