

st. cloud window

# SCW5000 Series



## Product

- Frame depth 5"
- Nominal 0.08" wall thickness
- AW-PG100
- STC 32-42
- OITC 25-36
- U-Value 0.40-0.57

## Configuration

- Vertical Sliding
- Horizontal Sliding
- Fixed

## Applications

- All purpose
- Acoustic
- Historic
- Impact



st. cloud window

390 Industrial Blvd, Sauk Rapids, MN 56379  
800.393.9311 | [www.stcloudwindow.com](http://www.stcloudwindow.com)

## Features

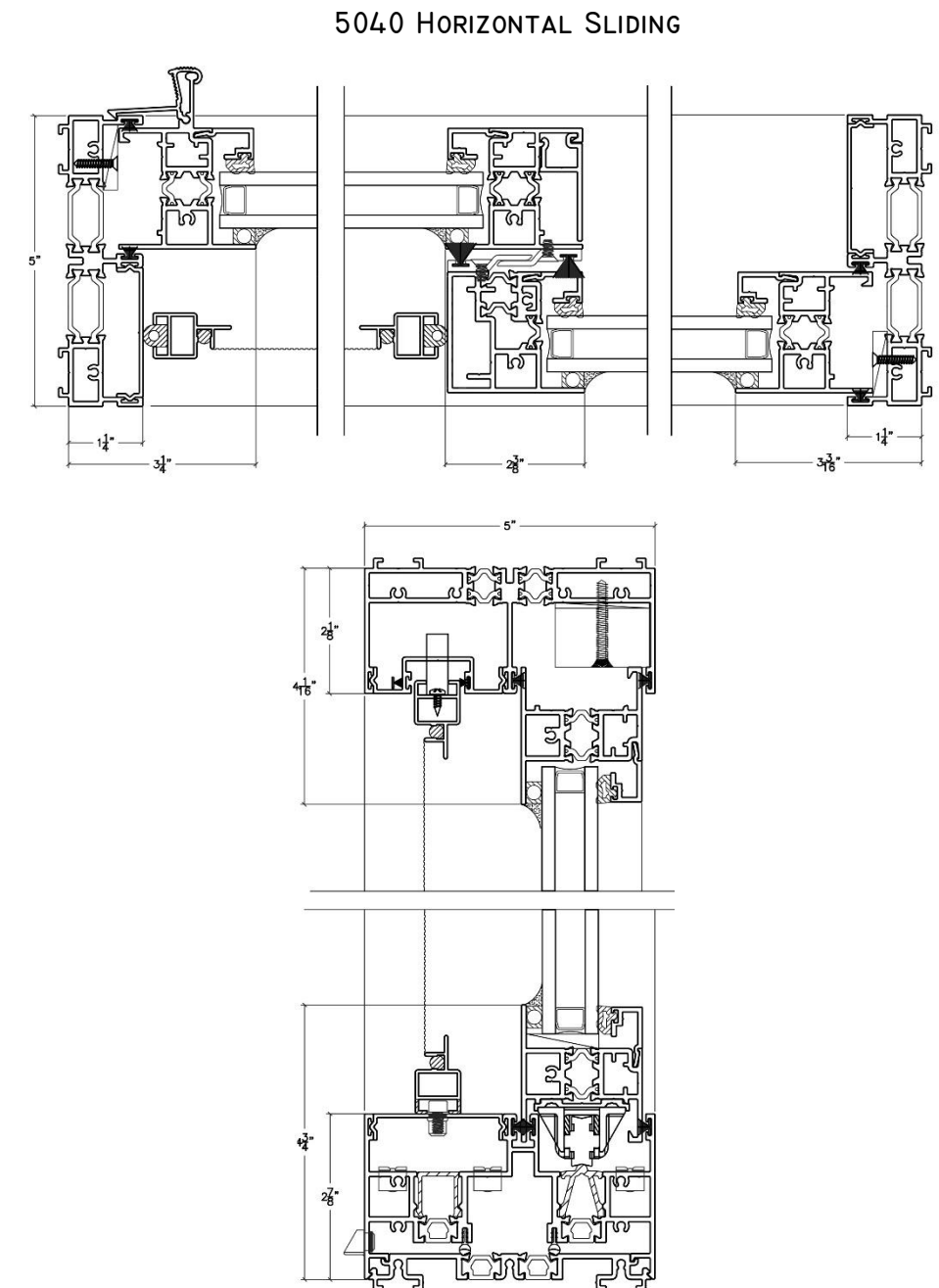
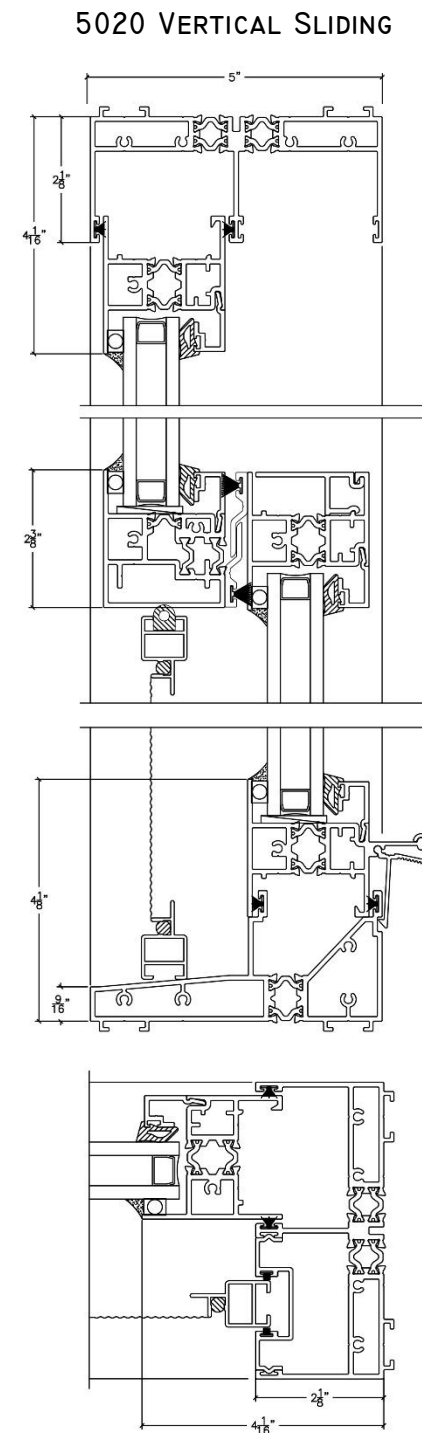
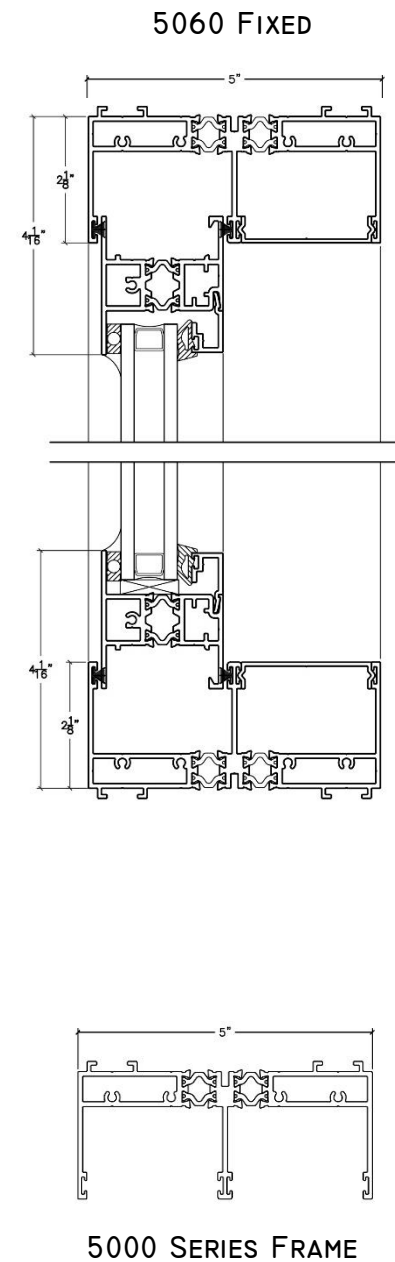
- Frame depth 5"
- Nominal 0.08" wall thickness
- 6063-T6 Aluminum alloy
- Thermal barrier: PA-66 Insulbar structural strut
- Weather stripping: Integral 5-fin 100% woven pile for minimal air infiltration
- Extruded aluminum corner keys provide joint strength and alignment
- Integral weep system for superior water penetration resistance
- Spring-loaded automatic lock for operable sash rail
- Sash rollers adjustable for easy operation on sliders stainless-steel axles to carry maximum sash weight
- High performance 70% Kynar (AAMA 2605) paint, Class I anodized finishes
- Vertical or horizontal mullion options to meet design specifications and for added strength
- Exterior profiles/panning customized for specific historic requirement
- Class 5 balances for hung configurations allow for oversize sash weight

## Glazing

- 1" - 1.5" overall thick IG glass, factory glazed
- Unit can adjust for 1/4", 3/8", or 1/2" glass within IG
- Triple glazing options available

## Performance Data

SCW5000	Thermal		Acoustic		Air Infiltration at 6.24 lbf/ft <sup>2</sup>	Water Penetration	Structural Load Pressure	Condensation		Forced Entry Rating	FGIA Rating	Test Size
	U Value	SHGC	STC	OITC				CR	CRF			
5020 Vertical Sliding	.40	.19	32-37	27-32	.13 cfm/ft <sup>2</sup>	15.03 psf	±135.5 psf	40-41	52-54	Grade 10	AW-PG90	60" x 99"
5040 Horizontal Sliding	.40	.19	32-42	25-35	.102 cfm/ft <sup>2</sup>	12.11 psf	±150.3 psf	42-47	59-64	Grade 10	AW-PG100	99" x 60"
5060 Fixed	.40	.19	40	36	.13 cfm/ft <sup>2</sup>	15.03 psf	±150.3 psf	45-46	59-60	Grade 10	AW-PG100	60" x 99"

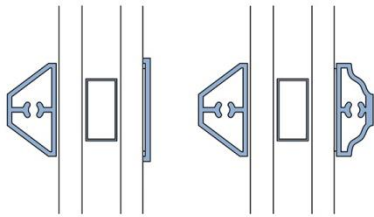


# SCW5000 Series

## Optional Features

- **Profiles:** Exterior panning in custom shapes, interior trims, and mullions
- **Glazing:** High performance, double, and triple insulated glass as well as tints, low-e, tempered, and laminated options
- **Finish:** Anodized or high-performance paint finishes, unlimited colors, dual/split colors and finishes
- **Accessories:** Simulated divided lite muntin grids, removable interior sash, and removable screens
- **Hardware:** Lock, and operator options

Additional option details available at: [www.stcloudwindow.com/products](http://www.stcloudwindow.com/products)



Typical Muntin Bars



st. cloud window

390 Industrial Blvd, Sauk Rapids, MN 56379  
800.393.9311 [www.stcloudwindow.com](http://www.stcloudwindow.com)